

1 CITY HALL



Completed in 1903, the City Hall was occupied by the Municipal Council the following year. It was renovated for the first time in 1960 since its construction. External viewing.

📍 Jalan Padang Kota Lama

2 TOWN HALL



Built for social functions such as weddings and parties, it was declared open in 1880. Its rooms were used as municipal offices until 1903. The building was also once used as a private college until its reinstatement as a venue for civic events after its restoration in 2005. External viewing.

📍 Jalan Padang Kota Lama

3 PENANG STATE ART GALLERY



Officially launched in 1964, the Penang State Art Gallery houses a comprehensive collection devoted to modern and contemporary art. The non-circulating collection documents paintings, sculptures, drawings, prints, photography, architecture, designs, performances, videos, films, and emerging art forms from year 1965 to the present.

📍 Level 1 & 3, Dewan Sri Pinang, Jalan Tun Syed Sheh Barakbah  
🕒 Opens: 9am - 5pm  
📅 closed on Fridays & public holidays  
🌐 www.penangmuseum.gov.my

4 ESPLANADE (PADANG KOTA LAMA)



Penang Recreation and Cricket Clubs occupied the field till 1932. In 1908, the Cricket Club built a 2-storey pavilion to replace their old one and it was given up in 1940 to be demolished for the Esplanade to be returned for public use.

📍 Jalan Tun Syed Sheh Barakbah

5 FORT CORNWALLIS



The original nibong palm stockade fort, built in 1786, was replaced by a brick structure complete with a moat in 1804-1805. The moat was filled up in 1922.

📍 Jalan Tun Syed Sheh Barakbah  
🕒 Admission 9am - 7pm  
🌐 www.theesplanadepark.com.my

6 QUEEN VICTORIA MEMORIAL CLOCK TOWER



Penang millionaire Cheah Chen Eok paid for the building of the 60ft tower to commemorate Queen Victoria's Diamond Jubilee. It was presented to George Town in 1902. External viewing.

📍 Lebu Light

7 STATE ASSEMBLY BUILDING



The mid-19th century building served as the Police Courts which was part of the Central Police Station. It became the State Assembly building in 1963. External viewing.

📍 Lebu Light

8 PINANG PERANAKAN MANSION



Former residence of the Hai San secret society leader, Kapitan Cina Chung Keng Kwee (1821-1901). It was built in the late 1890s on the site of Ghee Hin secret society headquarters.

📍 29, Lebu Geraja  
🕒 Opens 9.30am - 5pm daily  
📞 +604-264 2929  
🌐 www.pinangperanaknmansion.com.my

9 PENANG 3D TRICK ART MUSEUM



An interactive museum with a concept that stimulates creativity and imagination. Visitors are guided to ensure the best photos are taken.

📍 10, Lebu Penang  
🕒 Opens 9am - 6pm [weekdays]  
🕒 11am - 8pm [weekends & public holidays]  
📅 (last admission one hour before closing)  
🌐 www.penangtrickart.com

10 WONDERFOOD MUSEUM PENANG



An interactive, informative, creative and fun place that is also mouth-watering with some larger-than-life exhibits of Penang favourites, served within a colonial building.

📍 49, Lebu Pantai  
🕒 Opens 9am - 6pm daily  
🕒 (last admission 5pm)  
📞 +604-251 9095

11 TANJONG CITY MARINA



The marina spans 1.6ha and is adjacent to the Penang Ferry Terminal. Formerly known as the Church Street Pier, it is Malaysia's first inner city marina.

📍 Pengkalan Weld

12 PENANG FERRY SERVICE



Penang Ferry began its operations back in 1920, making it the oldest ferry service in Malaysia. These iconic ferries ply between Seberang Perai, Mainland and Penang Island, carrying both passengers and vehicles.

📍 Pengkalan Weld

13 CLAN JETTIES



Built on stilts over the sea, this traditional Chinese waterfront settlement was home to the city's early seafarers and fishermen. The Clan Jetties are a cherished and conserved element of George Town's cultural heritage legacy.

Experience live arts and cultural performances about the history of Clan Jetties at **Folklore By The Sea** at Chew Jetty.

📍 Pengkalan Weld  
🕒 Opens 11am - 9pm daily  
📞 +6011-6246 2884 / +6014-226 9549

14 LITTLE INDIA



This little quarter of South Indian culture is the place where early Indian immigrants first settled down in Penang. It is the island's epicentre of Indian music, savoury cuisine, exotic spices and authentic goods.

📍 Lebu Pasar

15 ST. GEORGE'S CHURCH



This is the oldest Anglican Church in Southeast Asia and it celebrated its bicentenary in 2018.

📍 1, Lebu Farquhar  
📞 +604-261 2739

16 GODDESS OF MERCY TEMPLE



Reputedly the oldest Chinese temple in Penang. It was built in 1800 and controlled by equal Hokkien and Cantonese representation on the trustee board.

📍 Jalan Masjid Kapitan Keling

17 PENANG STATE MUSEUM



The museum was built for Penang Free School (PFS) in 1896. After PFS moved to Jalan Masjid Negeri in 1928, Hutchings School then occupied it until 1964 when the Penang State Museum took over.

📍 Lebu Farquhar  
🌐 www.penangmuseum.gov.my

\* Penang State Museum is currently closed. Targeted to open in 2023.

18 CHURCH OF THE ASSUMPTION



With the church's origins dating back to 1786, the present church building was first constructed in 1860. Extensively remodelled in 1929, the church was lucky to escape World War I with just a few broken glass windows.

📍 Lebu Farquhar

19 SRI MAHA MARIAMMAN TEMPLE



It was a shrine in the 1790s and was replaced by a temple in 1833. Temple expansion was carried out in 1933. The temple's main entrance and facade feature colourful sculptures of gods and goddesses.

📍 Lebu Queen

20 HAN JIANG ANCESTRAL TEMPLE



The Teechow community temple was built in 1864. It is the first Malaysian Chinese temple to use fibre optic and LED lighting for its decorative details.

📍 127, Lebu Chulia  
📞 +604-261 5629

21 KAPITAN KELING MOSQUE



Built in 1803, the brick mosque was named after the Captain of the Indian Muslim community, Kapitan Keling Kadir Mydin Merican, who is recognised as its founder.

📍 Jalan Masjid Kapitan Keling

22 KHOO KONGSI



One of the finest Chinese clan temples outside China, completed in 1906. It belongs to the Khoo surname clan.

📍 18, Cannon Square  
🕒 Opens 9am - 5pm daily  
📞 +604-261 4609

23 CHEAH KONGSI



One of the oldest Hokkien clan associations in Penang, completed in the 1870s.

📍 8, Lebu Armenian  
🕒 Opens 9am - 5pm daily  
📞 +604-261 3837

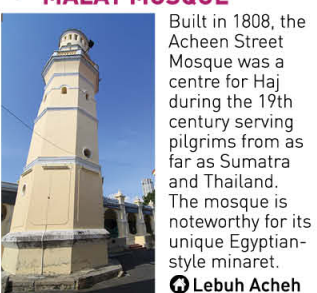
24 SUN YAT SEN MUSEUM PENANG



The centre is open to those who wish to learn more about Sun Yat-Sen, the revolutionary leader who is commonly referred to as the founding father of Republic of China and his activities in Penang.

📍 120, Lebu Armenian  
🕒 Opens 9am - 5pm [Tuesday to Saturday]  
1pm - 5pm [Sundays]  
📅 closed on Mondays  
🌐 sunyatsenpenang.com

25 ACHEEN STREET MALAY MOSQUE



Built in 1808, the Acheen Street Mosque was a centre for Haj during the 19th century serving pilgrims from as far as Sumatra and Thailand. The mosque is noteworthy for its unique Egyptian-style minaret.

📍 Lebu Acheh

26 PG GOLD MUSEUM



Experience the astonishing allure of gold through activities and demos at this museum.

📍 95, Lebu Bishop  
🕒 Opens 9am - 6pm daily  
📞 +604-261 9999  
📍 PG Gold Museum

27 CHEONG FATT TZE - THE BLUE MANSION



Built by Cheong Fatt Tze, one of the richest industrialists in Southeast Asia, in 1897 and completed seven years later. The Blue Mansion is a famous location for films and TV series.

📍 14, Lebu Leith  
(Guided tours are available daily at 11am, 2pm and 3.30pm)  
📞 +604-262 0006  
🌐 www.cheongfatttzmansion.com

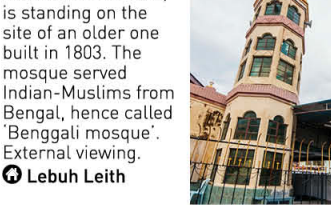
28 PROTESTANT CEMETERY



It developed soon after the British East India Company established a settlement in Penang in 1786. It is the final resting place of many important personalities connected to the establishment and early growth of George Town and Penang, including its founder Francis Light.

📍 Jalan Sultan Ahmad Shah

29 BENGALI MOSQUE



The present mosque, constructed in 1958, is standing on the site of an older one built in 1803. The mosque served Indian-Muslims from Bengal, hence called 'Bengali mosque'. External viewing.

📍 Lebu Leith

30 HAINAN ASSOCIATION & TEMPLE



The association was established in 1866 for Hainanese clansmen and it moved into the present building upon its completion in 1895.

📍 Lebu Muntri  
🕒 Opens 8am - 8pm daily  
📞 +604-262 3752

31 CAMPBELL STREET



Well known for its traditional Chinese medicinal halls, textile stores, jewellers and traditional eateries. Spot one of George Town's oldest markets - Campbell Street Market, built in 1900. The entrance to the market is a distinctive brick arch that is now painted white.

📍 Lebu Campbell

32 DARK MANSION - 3D GLOW-IN-THE-DARK MUSEUM



First of its kind in Malaysia, the interactive 3D art gallery showcases an astonishing 'day-to-night' transition of its exhibits.

📍 145-153 Lebu Kimberley  
🕒 Opens 10am - 6.30pm daily  
📞 +604-251 9694  
🌐 darkmansionpenang.com

33 UPSIDE DOWN MUSEUM



The gallery is interactive and a playful one with rooms creating the illusion that visitors are walking on ceilings and walls.

📍 45, Lebu Kimberley  
🕒 Admission 8.45am - 5.45pm [weekdays]  
8.45am - 6.45pm [weekends]  
📞 +604-264 2660  
📍 Upside Down Museum Penang

34 ASIA COMIC CULTURAL MUSEUM



Houses 1,500 masterpieces (both manuscripts and duplicates) and comic-related merchandises by 250 artists from 9 countries and regions in Asia.

📍 Level 2, ICT Mall, KOMTAR  
🕒 Opens 11am - 7pm [weekdays]  
11am - 9pm [weekends]  
📞 +604-371 5516 / +604-371 5512  
📍 Asia Comic Cultural Museum

35 TECH DOME PENANG



A science discovery centre comprising 120 interactive exhibits that include thematic galleries such as robotics, life tech, optics and electro-magnetism. It also features an Astronomy Observatory.

📍 Geodesic Dome, KOMTAR  
🕒 Opens 10am - 6pm [weekdays]  
10am-7pm [weekends & public holidays]  
📞 +604-262 6663  
🌐 www.techdomepenang.org

36 PENANG HOUSE OF MUSIC



Step in and discover Penang's music and musicians, their many contributions to the heart and soul of the state, and the nation.

📍 L4-02, Level 4, KOMTAR  
🕒 Admission 11am - 7pm daily  
📞 +604-370 6675  
🌐 www.penanghouseofmusic.com

37 THE TOP PENANG



Featuring a Jurassic Research Center with over 100 dinosaurs. Not to be missed Rainbow Skywalk and Observatory Deck.

📍 1, Jalan Penang  
🕒 Opens 11am - 8pm [weekdays]  
11am - 9pm [weekends]  
10am - 10pm [school holidays & selected public holidays]  
🌐 thetop.com.my

38 THE GRAVITYZ

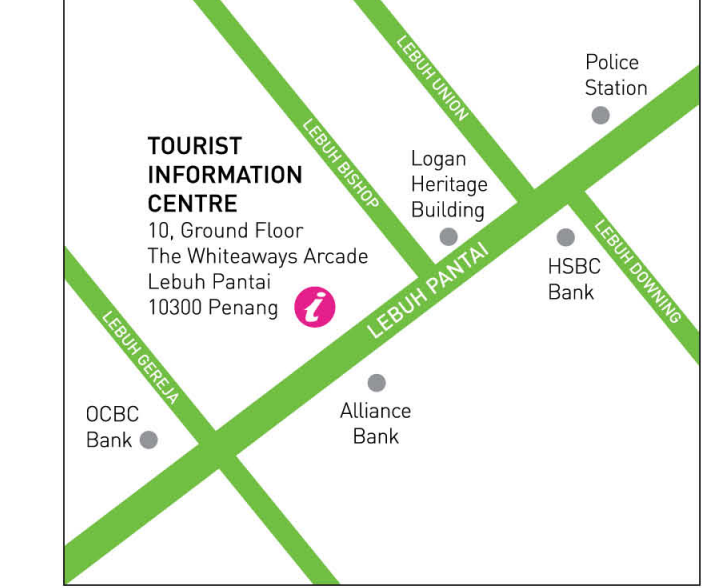
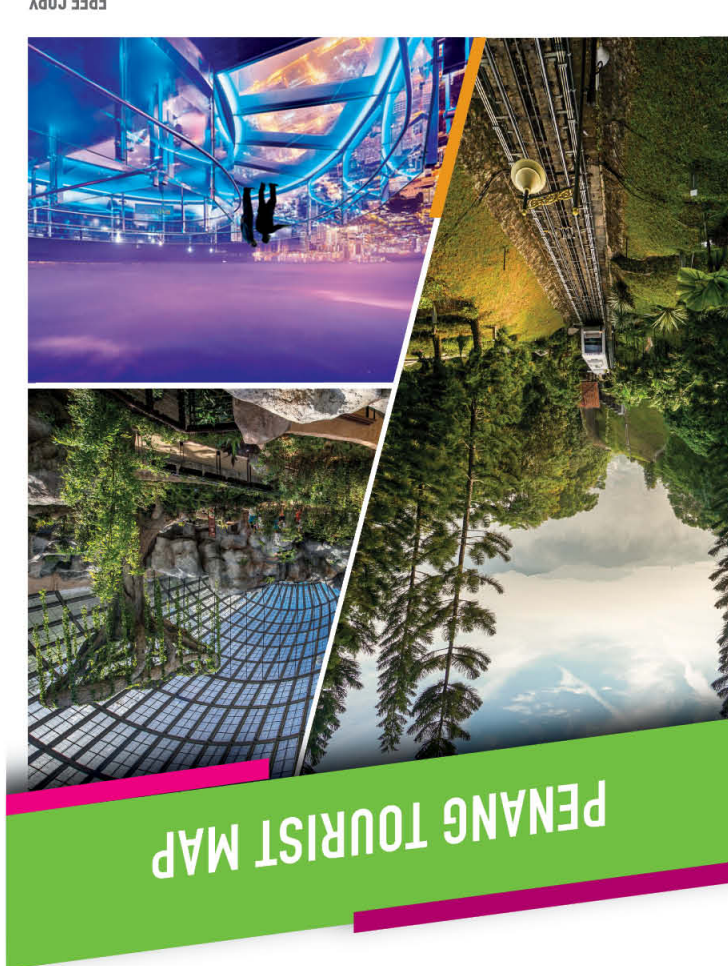


World's highest ropes course challenge located at level 65 of KOMTAR comprising obstacles along a 90m walk, 239m above ground on the outside of Penang's landmark monolith.

📍 Level 65, The Top Penang,  
1, Jalan Penang  
🕒 Opens 10am - 6pm daily  
📞 +604 293 0616  
🌐 www.thegravityz.com



Useful Information			
Telephonist Assistance & Emergencies			
Information and General Enquiries			102
Directory Service			103
Police / Ambulance			999
Fire Department			999
Civil Defence / Rescue			999
Customs Department			+604-262 2300
Tourist Police			+604-899 3222
Immigration Department			+604-250 3411 / +604-250 3410
General Post Office			+604-261 9222 / +604-261 9220
Penang International Airport			+604-252 0252 / +604-643 0373
Penang Port Commission			+604-263 3211
Tourist Offices			
Tourism Malaysia Penang			+604-261 0058 / +604-263 4941
Tourism Malaysia Tourist Information Centre			+604-262 2093
Tourist Information Centre (Lebu Light)			+604-263 1166
Penang Tourist Centre (Lebu Light)			+604-261 6663 / +604-261 6606
Transport Services			
Rapid Penang			+604-238 1212
Rapid Penang Hotline			+604-255 8000
Penang Hop-On Hop-Off Bus (Operates 8am - 8pm)			+6011-1230 5558
City Radio Taxi Service			+604-289 7621
Super Radio Taxi Service			+604-281 8766
Sunshine Radio Taxi Service			+604-642 5961
Aswan Radio Taxi Service			+604-210 8211
Ferry Terminal (Penang Island)			+604-210 2363
Ferry Terminal (Butterworth)			+604-310 2377
Langkawi Ferry Services			+604-264 2088
KTM Railway Office (Penang Island)			+604-261 0290
KTM Station (Butterworth)			+604-323 7962
Penang Hill Funicular Train			+604-828 8880 / +604-828 8839
Hospitals			
Bagan Specialist Centre			+604-371 0000 (24-Hour Assistance)
Balik Pulau Hospital			+604-866 9333
Penang General Hospital			+604-222 5333
Hospital Seberang Jaya			+604-382 7333
Gleneagles Medical Centre			+604-222 9111
Island Hospital			+604-228 8527 / +604-228 8222
Lam Wah Ee Hospital			+604-657 1888 / +604-652 8888
Loh Guan Yee Specialist Centre			+604-238 8888
Pantai Hospital			+604-643 3888
Penang Adventist Hospital			+604-222 7200
Adventist Medical Centre			+604-226 2323
Mount Miriam Cancer Hospital			+604-892 3999
KPJ Penang Specialist Hospital			+604-548 6688
Airlines			
AirAsia / AirAsiaX	Toll Free:	1600 85 8888	
Cathay Pacific		+603-6207 4989	
China Airlines		+604-228 9227 / +604-228 6227	
China Southern Airlines		+604-227 8878 / +604-441 4801	
Emirates		+604-6207 4999 / +603-2058 5888	
Firefly		+604-630 6665 / +603-7845 4543	
Lion Air		+604-641 6144 / +604-641 5144	
Malaysia Airlines		1300 88 3000	
Malindo Air	Toll Free:	+603-7841 5388	
Qatar Airways		+604-641 0396 / +603-2118 6100	
Silk Air		+604-263 3201	
Consulates / Embassies			
Australia			+604-226 8955 / +603-2146 5555
Austria			+604-398 3980 / +603-2057 0020
Bangladesh			+604-262 1085 / +603-4252 2652
Britain			+604-227 5336 / +603-2170 2200
Brunei			+603-8888 7777
Canada			+601-388 9900 / +603-2718 8333
China			+604-218 9795 / +603-2142 8495
Denmark			+604-264 3445 / +603-2032 2001
Finland			+604-229 4300 / +603-4257 7746
France			+604-642 2611 / +603-2053 5500
Germany			+604-263 2566 / +603-2170 9466
India			+603-4205 2350 / +603-4205 2351
Indonesia			+604-227 4686 / +603-2116 4000
Japan			+604-226 3030 / +603-2177 2600
Nepal			+603-2020 1898
Pakistan			+604-282 8800 / +603-2161 8877
Poland			+604-502 5334 / +603-2161 0805
Russia			+604-609 9164 / +603-4256 0009
South Africa			+603 2170 2400
South Korea			+603-4251 2336
Thailand			+604-226 8029 / +603-2148 8222
USA			+603-2168 5000



The Tourist Information Centre in George Town handles enquiries, provides brochures and directional maps as well as highlights the latest events and happenings in Penang.



1 **WAT CHAYAMANGKALARAM**



Built in 1845, this Thai Buddhist temple houses one of the largest Reclining Buddha statues in the world. Spectacular to behold, the Reclining Buddha statue is completely gold-plated and is 33m long. Also, you will find magnificently crafted statues of Devas and other mythical creatures on the temple grounds.

17, Lorong Burma, Pulau Tikus  
Opens 8am – 5pm daily  
+6016-410 5115

2 **DHARMIKARAMA BURMESE TEMPLE**



Located on Lorong Burma, Dharmikarama Burmese Temple is a favoured venue during the Songkran Festival – Thailand's traditional New Year's Day celebrated in April. The temple's serene surroundings feature a Bodhi tree, wishing pond and pagoda.

24, Lorong Burma, Pulau Tikus  
Opens 6am – 6pm daily  
+604-226 9575

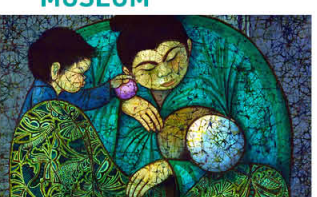
3 **STARBUCKS SIGNING STORE**



Opened in November 2019, this is the 1st signing store in Penang and the 4th in the world. It is dedicated to offer employment opportunities to individuals who are deaf and hard of hearing. The 3-storey outlet is equipped with digitally enhanced inclusive designs.

403-A, Jalan Burma  
8am – 10pm (Sunday to Thursday)  
8am – 12am (Friday to Saturday)  
+604-240 6133

4 **BATIK PAINTING MUSEUM**



The first ever museum showcasing the making of batik in Malaysia, mainly hosted by local pioneer batik artists. Visitors will learn about the evolution of this fascinating artwork over decades.

19, Lebuh Armenian  
Opens 10am – 6pm daily  
www.batikpgp.com

5 **ASIA CAMERA MUSEUM**



Asia Camera Museum features more than 1,000 cameras and photographic accessories where a majority are antique cameras. Some of the highlights of the museum include a rare Magic Lantern projector from the early 1900s and a 35mm silent movie projector that is illuminated using oil lamp and gear.

71, 1<sup>st</sup> Floor, Lebuh Armenian  
Opens 10am – 6pm daily  
+6019-560 3034  
asiacameramuseum.com

6 **HIN BUS DEPOT**



This unique contemporary art space that used to be an old bus depot is now a partially renovated art-deco building that showcases progressive artists, artworks and art forms. There is almost always an exhibition in progress, and the creative murals in the grounds are always on view. There's also a weekly Sunday pop-up market held from 11am to 5pm.

31a, Jalan Gurdwara  
12pm – 8pm (weekdays)  
11am – 8pm (weekends)  
www.hinbusdepot.com  
Hin Bus Depot

7 **P. RAMLEE'S HOUSE**



This landmark commemorates the late larger-than-life comedian, actor, singer, composer and film director P. Ramlee. It chronicles his life as well as showcases his personal memorabilia.

Jalan P. Ramlee, Taman Kampar  
Opens 9am – 5:30pm  
Closed on Mondays, except during public holidays or school holidays  
+604-281 7484

8 **PENANG STATE MOSQUE**



One of the most beautiful mosques in the country. Construction of the Penang State Mosque was completed in 1980. Elegant and iconic, the mosque is located on a 45ha land that is able to accommodate up to 5,000 worshippers.

Jalan Air Itam  
Opens 9am – 5pm  
Please dress appropriately and remove your shoes before entering. Permission to enter must be obtained from mosque officials.

9 **SUFFOLK HOUSE**



Suffolk House was built in the 1780s on a vast estate owned by the founder of Penang, Captain Francis Light. The mansion features authentic Anglo-Indian architecture, which earned it a special recognition from UNESCO. Today, part of the mansion has been converted into an upscale restaurant.

250, Jalan Air Itam  
Opens 10am – 6pm daily for public viewing / 12pm – 10pm for dining at restaurant  
+604-228 3930 / +6012-444 0650  
www.suffolkhouse.com.my

10 **i-Box DESIGN GLASS MUSEUM**



The one and only Glass Museum in Penang that specialises in fused glass, batik glass painting and creative glass art. i-Box Design is listed in the Malaysia Book of Records as the first Glass Museum in Malaysia and the first to have the longest Motive Glass Painting in Malaysia.

6, Jalan Burma  
Opens 9.30am – 6pm (weekdays)  
9.30am – 5pm (Saturdays)  
closed on Sundays & public holidays  
+604-251 9880 / +604-251 9881  
www.iboxglass.com

11 **GURNEY DRIVE**



Named after Sir Henry Gurney, a High Commissioner of Malaya, this seafront promenade is famous for its open-air hawker place and shopping malls such as Gurney Plaza and Gurney Paragon, both upscale malls with many international boutiques.

Persiaran Gurney

12 **WATERFALL HILLTOP TEMPLE**



Dedicated to the deity Murugan, the Arunigu Balathandayapaasani Temple (also known as Waterfall Hilltop Temple), is one of the oldest Hindu temples in Penang. The temple is the last stop for devotees during the annual Thaipusam procession where they need to climb 513 steps up the hill.

25, Jalan Kebun Bunga, Pulau Tikus

Bus Information - Explore Penang by Rapid Penang	
Places of Interests	Bus Route
Airport	102 (from Teluk Bahang, KOMTAR) / 401 / 401E / AT (from Weld Quay, KOMTAR)
Sungai Nibong Bus Terminal	303 / 304
Heritage Trail – George Town	
Clan Jetties	CAT / 10 / 11 / 101 / 201 / 202 / 203 / 204 / 206 / 301 / 302 / 303 / 401 / 401E / 502
Clock Tower	CAT / 10 / 11 / 12 / 101 / 201 / 202 / 203 / 204 / 206 / 301 / 302 / 303 / 401E / 502
Fort Cornwallis	CAT / 204 / 502
Kapitan Keing Mosque	CAT / 301 / 302 / 303 / 401
Khoong Keng	CAT / 12 / 301 / 302 / 303 / 401
Kuan Yin Temp Temple	11 / 101 / 201 / 202 / 203 / 206
Kuala India	CAT / 11 / 12 / 101 / 201 / 203 / 206 / 301 / 302 / 303
Penang Museum & Art Gallery	CAT / 103 / 204 / 502
Cheong Fatt Tze Mansion	CAT / 104 / 204 / 502
Peranakan Museum	CAT
Sri Mahamariamman Temple	CAT / 10 / 11 / 101 / 201 / 202 / 203 / 204 / 206 / 301 / 302 / 303 / 306 / 401 / 502
St. George's Church	CAT / 204 / 502
Parks	
Air Itam Dam	201 / 203 / 204 / 502
Penang Botanic Gardens	10
Forest Recreation Park & Museum	101 / 102 / 501
Penang Hill	204
Penang National Park	101 / 102 / 501
Youth Park	101 / 102
Tropical Spice Garden	101 / 102
Tropical Fruit Farm	101 / 102 / 501
Penang Bird Park	201 / 203 / 204 / 502
Beaches / Shopping	
Prangin Mall / 1st Avenue / KOMTAR	CAT
Batu Ferringhi Beach	101 / 102
Gurney Plaza / Gurney Paragon	10 / 101 / 102 / 103 / 104 / 304
Straits Quay / Penang PAC	102
Island Plaza	101 / 102 / 103 / 104
Queensbay Mall	304 / 401E / or 306 (from Penang Airport) / or 308 (from Sungai Nibong bus terminal)
Tanjung City Marina	CAT / 10 / 11 / 101 / 103 / 104 / 201 / 202 / 203 / 204 / 206 / 301 / 302 / 303 / 401 / 401E / 502
Penang-Jerejak Island Jetty	401E
Penang SPICE Arena	302 / 303 / 304 / 401E / 308 (from Sungai Nibong Bus Terminal)
Batik Kawan	401 / 401E / 501 / 502
Tesco Egate	206
Tesco Tg Sg Pinang	101 / 102
Sunway Carnival Mall	709
Design Village, Batu Kawan	801 (from Penang Sentral, Butterworth to Simpang Ampat Railway Station, then take CAT Batu Kawan to Design Village)
Temples & Museums	
Kek Lok Si Temple	201 / 203 / 204 / 502
P. Ramlee House	206
Penang War Museum	302
Snake Temple	102 / 401 / 401E / or 306 (from Penang Airport)
Wat Chayamangkalaram	101 / 101 / 103 / 104
Dharmikarama Burmese Temple	101 / 101 / 103 / 104
Toy Museum	101 / 102
Floating Mosque	101 / 102
Sun Yat Sen Centre (Macalister Rd)	101 / 101 / 103 / 104
Suffolk House	201 / 202 / 203 / 204 / 502
Colonial Penang Museum	10 / 101 / 103 / 104
St. Anne's Church	709
Markets	
Batu Ferringhi Night Market	101 / 102
Chowrasta Market	CAT / 10 / 11 / 101 / 103 / 104 / 201 / 202 / 203 / 204 / 206 / 304 / 502
Lorong Kulit Flea Market	102 / 201 / 202 / 203 / 204 / 206 / 304 / 502
Deal Street Market	301 / 302 / 401
Pulau Tikus Market	101 / 104 / 304
Local Night Markets (Pasar Malam)	
Macallum Street (Ghaat Mon)	303
Batu Ferringhi (Tue)	101 / 102
Farlim (Wed)	202 / 203
Jalan Mahani, Bayan Baru (Thu)	302 / 303 / 401E
Taman Kheng Tian, Jelutong (Fri)	11
Sungai Dua (Sat)	301 / 303 / 304 / 308
Paya Terubong (Sun)	201 / 202 / 306
For more information about Rapid Penang's bus routes, please contact the company at: Tel: +604-255 8000 (toll-free) / +604-238 1212 or visit www.rapidpg.com.my	
Information is correct at time of printing. Please check website for more up-to-date bus routes.	

13 **PENANG BOTANIC GARDENS**



The 30ha garden was set up in 1884 to collect botanical specimens from the surrounding hills. Today, it is a popular place for recreational activities among locals. Two must-see attractions are the Japanese Garden and the Bambusetum within the arboretum.

Jalan Kebun Bunga  
Opens 7am – 7pm daily  
+604-226 4401

14 **COLONIAL PENANG MUSEUM**



This museum provides a sense of lifestyle and intricate art form of the British administrators and wealthy merchants of old Penang. It educates and enhances the understanding of its rich heritage and joint historical path.

7, Jalan D.S. Ramanathan  
Opens 9.30am – 5.30pm daily  
+604-228 8561 / +6012-528 8005

Colonial Penang Museum

15 **PENANG MUNICIPAL PARK**



The park was built in the 1970's on quarry land. It is a popular venue for sports activities and to unwind after a busy day. There's also a skating rink, waterpark plus an outdoor auditorium for open-air festivals and concerts.

Persiaran Kuari  
Opens 7am – 7pm daily  
+604-226 3051

16 **TEDDYVILLE MUSEUM**



This interpretative museum is Malaysia's first and largest collection of teddy bears from various nations and eras as early as the 1900s. Check out the very first batches of teddy bears ever made, to miniature teddies and even human sized ones.

Double Tree Resort, Batu Ferringhi  
Opens 9am – 6pm daily  
+604-890 5345

www.teddyvillemuseum.com

17 **FLOATING MOSQUE**



Malaysia's first ever floating mosque is located along the scenic stretch of Tanjung Bungah with the capacity to accommodate up to 1,500 worshippers. The mosque features an attractive blend of local and Middle Eastern architecture with a seven-storey minaret, built on the sea surface.

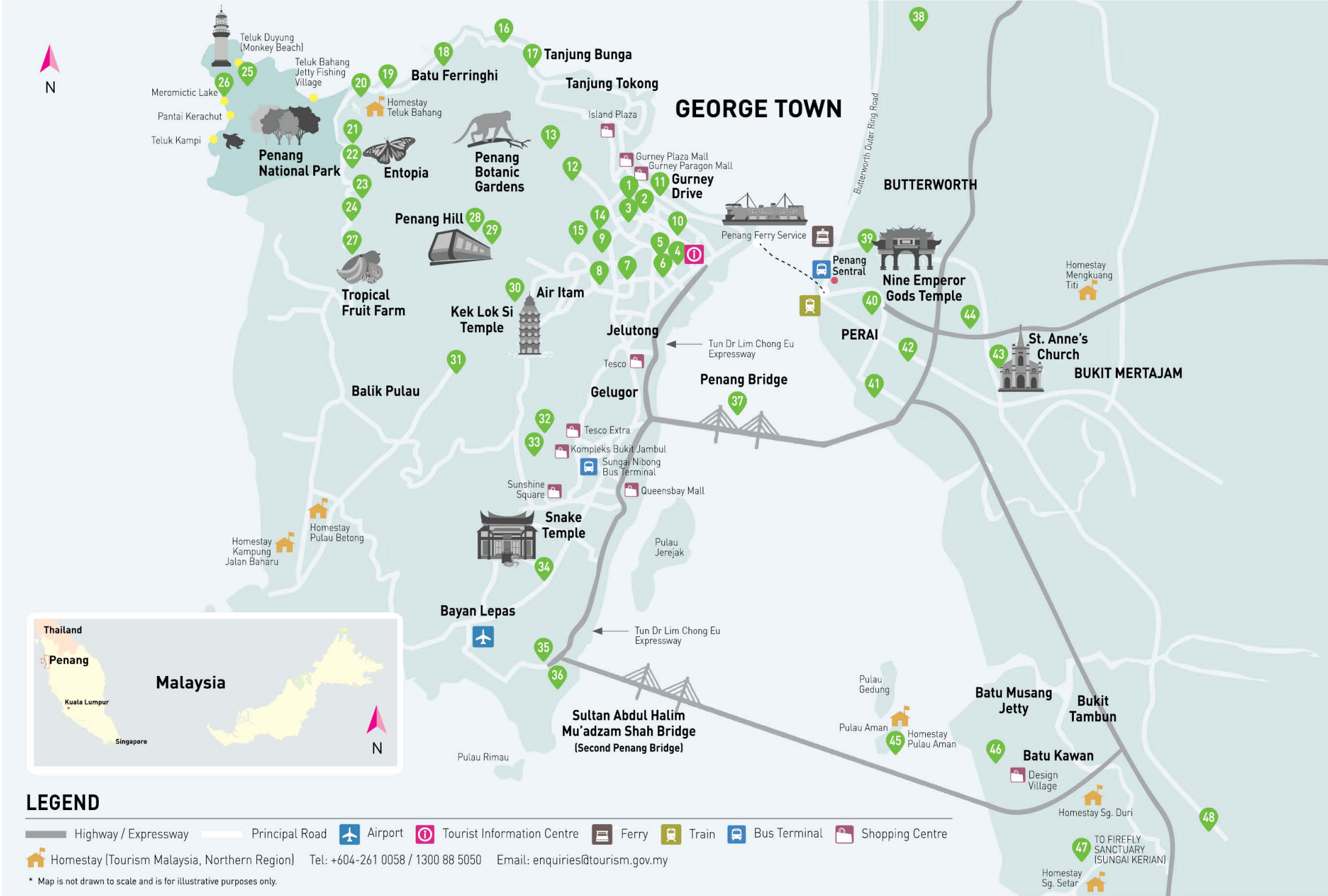
Jalan Tanjung Bungah

18 **BATU FERRINGHI**



Batu Ferringhi is most popular for its sandy beaches and it draws endless streams of tourists every year. Along this winding stretch of beach, you will find a host of fun activities such as water sports and horse riding. The area comes to life with a night bazaar when the sun goes down.

Jalan Batu Ferringhi



LEGEND

- Highway / Expressway
- Principal Road
- Airport
- Tourist Information Centre
- Ferry
- Train
- Bus Terminal
- Shopping Centre
- Homestay (Tourism Malaysia, Northern Region) Tel: +604-261 0058 / 1300 88 5050 Email: enquiries@tourism.gov.my

\* Map is not drawn to scale and is for illustrative purposes only.

19 **TROPICAL SPICE GARDEN**



Discover Penang's legacy as a spice island in Asia's only award-winning spice garden. Set out over 8 acres of secondary forest, Tropical Spice Garden is home to over 500 exotic types of unique plants with beautifully landscaped trails.

Jalan Teluk Bahang  
Opens 9am – 6pm daily  
(last admission at 5.15pm)  
+604-881 1797  
tropicalspicegarden.com

20 **TOY MUSEUM**



It is the country's first toy museum that has earned a spot in the Malaysia Book of Records. Toy Museum features over 11,000 toys, dolls and other collectibles including life-size figures of blockbuster movie characters.

Jalan Teluk Bahang  
Opens 9am – 6pm daily  
(last admission at 5.30pm)  
+6012-460 2096

21 **ESCAPE**



A departure from the conventional idea of roller-coaster rides, ESCAPE is an outdoor theme park with challenging activities and games suited for children and adults. Sprawled over 22 acres, the park comprises two main components – Adventureplay and Waterplay that includes the World's Largest Water Slide.

Jalan Teluk Bahang  
Opens 10am – 6pm (Mondays closed)  
+604-881 1106  
www.escape.my

22 **ENTOPIA**



Set within this lush tropical sanctuary and vivarium are two attractions – The Natureland living outdoor gardens and The Cocoon indoor discovery centre. Over 150 species of fauna and 200 species of flora are showcased throughout Entopia. Its discovery centre features two floors of interactive learning exhibits and activities.

Jalan Teluk Bahang  
Opens 9am – 6pm daily  
(last admission at 5pm)  
+604-888 8111  
entopia.com

23 **FOREST RECREATION PARK AND MUSEUM**



Beautiful floras and faunas can be found in this 100-acre landscaped park. At the museum, you can also learn how the forestry sector plays an important role in the socio-economic development of Malaysia.

Taman Rimba, Teluk Bahang  
Opens 7am – 7pm daily  
+604-885 1280

24 **TELUK BAHANG DAM**



Located off the northern cape of Penang Island, its scenic surroundings are a favourite picnic spot for locals. Teluk Bahang Dam sets the dramatic stage for the annual Penang International Dragon Boat Festival races.

Teluk Bahang

25 **PENANG NATIONAL PARK**



One of the smallest national parks in the world and home to a rich natural heritage, Penang National Park is a definite must-visit place for nature lovers. Take on the nature trails and hike all the way up to the pristine beaches of Teluk Duyung, Muka Head or Pantai Kerachut. The park is also home to a turtle sanctuary, located on Pantai Kerachut.

Jalan Hassan Abbas  
Opens 8am – 5pm daily  
+604-881 3530 / 00  
www.penanghill.gov.my

26 **MEROMICTIC LAKE**



The Meromictic Lake comprising freshwater and saltwater is located in the Penang National Park. This phenomenon is a rarity where only three in Asia and one in Malaysia exist. Meromictic describes a condition where two layers of liquids (salty sea water and fresh water) of different density and temperature combine but remain separated. The Meromictic Lake only occurs between May to August in the year.

Pantai Kerachut, Penang National Park

27 **TROPICAL FRUIT FARM**



A 25 acre organic orchard with over 250 types of tropical and subtropical fruits. Relax and enjoy breathtaking views while sampling a wide variety of freshly cut fruits and fruit juices. Also, sample and buy fruit enzymes, honey as well as fruit tea and cinnamon Ceylon tea at the farm's retail shop.

Batu 18, Jalan Teluk Bahang  
Opens 9am – 5pm daily  
+6012-971 1931  
www.tropicalfruits.com.my

28 **PENANG HILL**



At 830m above sea level, Penang Hill offers a panoramic view of the city. Get to the top by hiking or taking a funicular train to enjoy scenic views of the hill. At the summit, explore the flower garden, mini bird park, owl museum, bungalows, guesthouses and historic Bellevue Hotel. Also, there's The Habitat providing the most authentic, diverse and educational rainforest experience.

Jalan Stesen Bukit Bendera, Air Itam  
Opens 6.30am – 11pm daily  
(last train from top station 11pm)  
+604-828 8880 / 39  
www.penanghill.gov.my

29 **THE HABITAT PENANG HILL**



The Habitat is a world class eco-tourism facility on the fringes of a 130-million year old virgin rainforest on Penang Hill. It promotes environmental and conservation awareness among visitors through its amazing nature trails, canopy walkways and zip lines.

Penang Hill, Jalan Stesen Bukit Bendera, Air Itam  
Admission 9am – 7pm (exit by 8pm)  
+604-826 7677  
thehabitat.my

30 **KEK LOK SI TEMPLE**



Kek Lok Si is one of the largest Buddhist temples in Southeast Asia. It is home to a seven-story handcrafted "Pagoda of Ten Thousand Buddhas" and a 30.2m bronze Kuan Yin statue. During Chinese New Year, over 200,000 decorative lights and lanterns illuminate the temple.

Tingkat Lembah Ria 1, Ayer Itam  
Opens 8.30am – 5.30pm daily  
(extended hours during Chinese New Year)  
+604-828 3317  
keklokstemple.com

31 **AIR ITAM DAM**



Opened in 1962, Air Itam Dam is a popular recreational and picnic venue. It is located on gentle hillocks next to Penang Hill. The dam commands panoramic views of the island and George Town.

Jalan Balik Pulau, Air Itam

32 **UNIVERSITI SAINS MALAYSIA (USM) MUSEUM AND ART GALLERY**



The museum exhibits a diverse collection of artefacts, textiles, prints, traditional jewellery and Malay daggers as well as a collection of paintings from the Baba-Nyonya and Malay cultures.

Universiti Sains Malaysia (USM), Gelugor  
Opens 9am – 5pm (Monday - Thursday)  
9am – 12pm & 2.45pm – 5pm (Fridays)  
(weekends & public holidays closed)  
+604-653 3261 / 2483

33 **PENANG GOLF CLUB**



This world-class golf course offers formidable fairways and greens surrounded by rock passages and dense jungle. Its stunning 18 hole 5,763m, par 72 golf course was designed by Robert Trent Jones Jr., a noted golf course architect.

Jalan Bukit Jambul  
Opens 7.30am – 9pm  
+604-644 2255

34 **SNAKE TEMPLE**



Built in the 1850's, the temple is dedicated to Chor Soo Kong, a Buddhist monk who was believed to have extraordinary healing powers. According to local folklore, he offered the pit vipers shelter to escape from danger and since then, the snakes have stayed in the temple.

Jalan Sultan Azlan Shah  
Opens 7am – 6pm daily  
+604-643 7273

35 **BATU MAUNG FISHING VILLAGE**



The Batu Maung Fishing Village is located at Penang Island's south-eastern tip. It is famed for a mysterious giant footprint on a boulder at the beach. Known as Tapak Geedembai, the Chinese believe the footprint was left by the mighty Admiral Cheng Ho. However, Indians believe it belonged to the monkey God Hanuman whilst the Malays believe it was from a fleeing giant.

Batu Maung

36 **WAR MUSEUM**



The Penang War Museum was built on the remnants of an Old British fort which defended Penang's coast. It features old war relics and depicts the lifestyle of soldiers in those times. The museum also offers an authentic battleground setting for paintball tournaments.

Jalan Batu Maung  
Opens 9am – 6pm daily  
+604-626 5142 (for reservations)  
+604-621 3606 (Jenny)  
Penang War Museum

37 **PENANG BRIDGE**



The first and main link between Penang Island and the mainland of Peninsular Malaysia, Penang Bridge opened in 1985 spanning 13.5km. It is also the annual site for the Penang Bridge International Marathon. A second link was however completed in 2014 (Sultan Abdul Halim Mu'adzam Shah) with a total length of 24km, connecting the south-eastern part of the island to the mainland.

38 **KAMPUNG AGONG**



Homestay Kampung Agong is a scenic site with traditional wooden houses overlooking paddy fields and coconut trees – perfect for cycling around to enjoy the beautiful countryside. There are also many unique photo opportunities here like giant bird nest swings.

Homestay Kampung Agong, Bakar Kapur, Penaga  
9am – 6pm daily  
+6016-429 7795

39 **NINE EMPEROR GODS TEMPLE**

