



Built in 1845, this Thai Buddhist temple houses one of the largest Reclining Buddha statues in the world. Spectacular to behold, the Reclining Buddha statue is completely gold-plated and is 33m long. Also, you will find magnificently crafted statues of Devas and other mythical creatures on the temple grounds.

📍 17, Lorong Burma, Pulau Tikus

🕒 Opens 8am – 5pm daily

☎️ +6016-410 5115

DHAMMIKARAMA BURMESE BUDDHIST TEMPLE



Located on Lorong Burma, Dhammikarama Burmese Buddhist Temple is Myanmar (Burmese) temple. The temple's serene surroundings feature a wishing pond and pagoda.

📍 24, Lorong Burma, Pulau Tikus

🕒 Opens 9am – 5pm daily

☎️ +604-226 9575

STARBUCKS SIGNING STORE

Opened in November 2019, this is the 1st signing store in Penang and the 4th in the world. It is dedicated to offer employment opportunities to individuals who are deaf and hard of hearing. The 3-storey outlet is equipped with digitally enhanced inclusive designs.

📍 403-A, Jalan Burma, Pulau Tikus

🕒 8am – 10pm daily

HIN BUS DEPOT



This unique contemporary art space that used to be an old bus depot is now a partially renovated art-deco building that showcases progressive artists, artworks and art forms. There is almost always an exhibition in progress, and the creative murals in the grounds are always on view. There's also a weekly Sunday pop-up market held from 11am to 5pm.

📍 31A, Jalan Gurdwara, George Town

🕒 Opens 10am – 10pm daily

Main Exhibition Space hours:
12pm – 7pm (Mon – Fri)
11am – 7pm (Sat & Sun)
Hin Market hours:
11am – 5pm Sat & Sun
www.hinbusdepot.com

📍 Hin Bus Depot

P. RAMLEE'S HOUSE



This landmark commemorates the life larger-than-life comedian, actor, singer, composer and film director P. Ramlee. It chronicles his life as well as showcases his personal memorabilia.

📍 Lot 2180, Jalan P. Ramlee, George Town

🕒 Opens 9am – 5pm
(Except for Friday: 9am–12pm & 3pm–5pm)
*closed on Mon, except school holidays

☎️ +604-281 7484

PENANG STATE MOSQUE



One of the most beautiful mosques in the country. Construction of the Penang State Mosque was completed in 1980. Elegant and iconic, the mosque is located on a 45ha land that is able to accommodate up to 5,000 worshippers.

📍 Jalan Air Itam, Air Itam

🕒 Opens 9am – 5pm daily

*Please dress appropriately and remove your shoes before entering. Permission to enter must be obtained from mosque officials.

☎️ +604-828 2212

SUFFOLK HOUSE



Suffolk House was built in the 1780s on a vast estate owned by the founder of Penang, Captain Francis Light. The mansion features authentic Anglo-Indian architecture, which earned it a special recognition from UNESCO. Today, part of the mansion has been converted into an upscale restaurant.

📍 250, Jalan Air Itam, George Town

🕒 Opens 12pm – 11pm for dining at restaurant

☎️ +604-228 3930

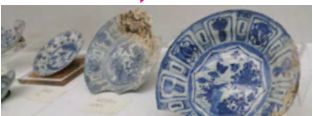
www.suffolkhouse.com.my

GURNEY DRIVE



Named after Sir Henry Gurney, a High Commissioner of Malaya, this seafront promenade is famous for its open-air hawkers place and shopping malls such as Gurney Plaza and Gurney Paragon, both upscale malls with many international boutiques.

STRAITS & ORIENTAL MUSEUM, PENANG



Documenting the splendour of porcelain and its significance to the ancient world, the museum managed to secure authentic pieces that were painstakingly recovered from tedious maritime expeditions from well-known wrecks such as the Warli, Tunang, Royal Nanhai, Nanjang, Xuande and Desha.

📍 20 Stewart Lane, George Town

🕒 Opens 10am – 6pm (last call at 5pm) daily

☎️ +6011-1722 7007 / +6012 208 0566 (hotline)

🌐 somuseum.asia

WATERFALL HILLTOP TEMPLE



Dedicated to the deity Murugan, the Arumigu Balathandayuthapani Temple (also known as Waterfall Hilltop Temple), is one of the oldest Hindu temples in Penang. The temple is the last stop for devotees during the annual Thaipusam procession where they need to climb 513 steps up the hill.

📍 Jalan Kebun Bunga, Pulau Tikus

🕒 Opens 6am – 12pm / 4pm – 9pm daily

☎️ +604-226 2593

PENANG BOTANIC GARDENS



The 30ha garden was set up in 1884 to collect botanical specimens from the surrounding hills. Today it is a popular place for recreational activities among locals. Two must-see attractions are the Japanese Garden and the Bambuseum within the arboretum.

📍 Jalan Kebun Bunga, Pulau Tikus

🕒 Opens 7am – 7pm daily

☎️ +604-226 4401

PENANG MUNICIPAL PARK



The park was built in the 1970's on quarry land. It is a popular venue for sports activities and to unwind after a busy day. There's also a skating rink, waterpark plus an outdoor auditorium for open-air festivals and concerts.

📍 Persiaran Kuari, George Town

🕒 Opens 7am – 7pm daily

☎️ +604-226 4401

TEDDYVILLE MUSEUM



This interpretative museum is Malaysia's first and largest collection of teddy bears from various nations and eras as early as the 1900s. Check out the very first batches of teddy bears ever made, to miniature teddies and even human sized ones.

📍 Double Tree Resort, 56 Jalan Low Yat, Batu Ferringhi

🕒 Opens 9am – 6pm daily
(Last admission 5pm)

☎️ +604-890 5345 / +604-890 0535

🌐 www.facebook.com/teddyvillemuseum

FLOATING MOSQUE



Malaysia's first ever floating mosque is located along the scenic stretch of Tanjung Bungah with the capacity to accommodate up to 1,300 worshippers. The mosque features an attractive blend of local and Middle Eastern architecture with a seven-story minaret, built on the sea surface.

📍 Jalan Batu Ferringhi, Tanjung Bungah

TROPICAL SPICE GARDEN



Discover Penang's legacy as a spice island in Asia's only award-winning spice garden. Set out over 8 acres of secondary forest, Tropical Spice Garden is home to over 500 exotic types of unique plants with beautifully landscaped trails.

📍 Lot 595, Mukim 2, Jalan Teluk Bahang, Teluk Bahang

🕒 9am–4.30pm (Mon – Thur)
*Last admission 1 hour before closing

☎️ +6012-423 6797 (WhatsApp only) / +6012-471 8797

🌐 tropicalspicegarden.com

Bus Information - Explore Penang by Rapid Penang

Places of Interests	Bus Route
Penang International Airport Sungai Nibong Bus Terminal	102 (from Teluk Bahang or KOMTAR) / 401 / 401E / 303 / 401 / 304 (from KOMTAR)
Heritage Trail - George Town	CAT / 11 / 101 / 201 / 202 / 203 / 204 / 206 / 301 / 302 / 303 / 401 / 401E / 502
Clan Jetties Queen Victoria Memorial Clock Tower Fort Cornwallis / Esplanade (Pasang Kota Lama) Kapitan Kelang Mosque Khoo Kongsi	CAT / 11 / 101 / 201 / 202 / 203 / 204 / 206 / 301 / 302 / 303 / 401 / 401E / 502
Goddess of Mercy Temple (Kuan Yin Temple) Little India Penang State Art Gallery Chiang Kai-Shek - The Blue Mansion Pinang Peranakan Mansion Sri Maha Mariamman Temple St. George's Church Protestant Cemetery City Hall / Town Hall	CAT / 204 / 502 CAT / 11 / 101 / 201 / 202 / 203 / 206 / 301 / 302 / 303 / 401 / 401E / 502 CAT / 301 / 302 / 303 / 401 11 / 101 / 201 / 202 / 203 / 206 CAT / 11 / 12 / 101 / 201 / 202 / 203 / 206 / 301 / 302 / 303 CAT / 204 / 502 CAT / 104 (from KOMTAR) / 204 / 502 CAT / 11 / 101 / 201 / 202 / 203 / 206 CAT / 204 / 502 CAT / 204 / 502 CAT / 204 / 502
Parks	
Air Itam Dam Penang Botanic Gardens	201 / 203 / 204 / 502 101 (alight at Adventist Hospital) / 103 from KOMTAR (alight at SMJK Phor Tay) 101 / 102 204 101 / 102 101 (alight at Adventist Hospital) / 103 from KOMTAR (alight at SMJK Phor Tay) 101 / 102 101 (alight at Adventist Hospital) / 103 from KOMTAR (alight at SMJK Phor Tay)
Forest Recreation Park & Museum Penang Hill / The Habitat Penang Hill Penang National Park Penang Municipal Park	204 101 / 102 101 (alight at Adventist Hospital) / 103 from KOMTAR (alight at SMJK Phor Tay) 101 / 102 101 (alight at Adventist Hospital) / 103 from KOMTAR (alight at SMJK Phor Tay)
Tropical Spice Garden Entopia by Penang Butterfly Farm Penang Bird Park Escape Penang Teluk Bahang Dam Firefly Jetty (Firefly Sanctuary)	101 / 102 101 / 102 709 / 703 / 801 (All from Penang Sentral) 101 / 102 101 / 102 801 (from Penang Sentral)
Beaches / Shopping	
Prangin Mall / 1st Avenue / KOMTAR Batu Ferringhi Beach Gurney Drive / Gurney Plaza / Gurney Paragon / Gurney Bay Straits Quay Island Plaza Queensbay Mall	CAT 101 / 102 101 / 102 / 103 (from KOMTAR) / 104 (from KOMTAR) / 304 (from KOMTAR) 102 101 / 102 401E / 304 (from KOMTAR) / 306 (from Penang Airport) / 308 (from Sungai Nibong Bus Terminal) CAT / 11 / 101 / 201 / 202 / 203 / 204 / 206 / 301 / 302 / 303 / 401 / 401E / 502
Tanjung City Marina Penang SPICE Arena / SPICE Aquatic Centre Balik Pulau Lotus's Egate Lotus's To Sp Pinang Sunway Carnival Mall Hin Bus Depot Karpal Singh Drive Penang 1st Bridge	302 / 303 / 401E / 304 (from KOMTAR) / 308 (from Sungai Nibong Bus Terminal) 401E / 502 204 / 13 101 / 102 709 / 703 (All from Penang Sentral) 302 / 303 / 401 12 CAT13 (CAT Bridge) from Bayan Baru Bus Terminal to Bluekiet Hotel, Butterworth CAT14 (CAT Bridge) from KOMTAR to The Summit, Bukit Mertajam 801 (from Penang Sentral) 706 (from Penang Sentral)
Temples & Museums	
Icon City Auto-City Juru	201 / 203 / 204 / 502 306 208 102 / 401 / 401E / 306 (from Penang Airport) 101 / 103 (from KOMTAR) / 104 (from KOMTAR) / 304 (from KOMTAR) 101 / 103 (from KOMTAR) / 104 (from KOMTAR) / 304 (from KOMTAR) 101 / 102 101 / 102 101 / 103 (from KOMTAR) 201 / 202 / 203 / 204 / 502 101 / 103 (from KOMTAR) / 104 (from KOMTAR) / 304 (from KOMTAR) 709 (from Penang Sentral) 204 / 201 / 202 / 203 CAT / 204 / 502 CAT / 204 / 502 CAT / 204 / 502 CAT / 101 / 11 CAT / 101 / 11 / 301 / 302 / 303 / 401 CAT / 101 / 11 / 201 / 202 / 203 / 204 / 301 / 302 / 303 / 401 / 401E
Kek Lok Si Temple P. Ramlee's House War Museum Snake Temple Wat Chayamangkalaram Dhammikarama Burmese Temple Toy Museum Floating Mosque Sun Yat Sen Centre (Macalister Rd) Suffolk House Colonial Penang Museum St. Anne's Church Penang State Mosque Penang State Museum Church of the Assumption House of Yeap Chor Ee Han Jiang Ancestral Temple Acheen Street Malay Mosque Cheah Kongsi	201 / 203 / 204 / 502 306 208 102 / 401 / 401E / 306 (from Penang Airport) 101 / 103 (from KOMTAR) / 104 (from KOMTAR) / 304 (from KOMTAR) 101 / 103 (from KOMTAR) / 104 (from KOMTAR) / 304 (from KOMTAR) 101 / 102 101 / 102 101 / 103 (from KOMTAR) 201 / 202 / 203 / 204 / 502 101 / 103 (from KOMTAR) / 104 (from KOMTAR) / 304 (from KOMTAR) 709 (from Penang Sentral) 204 / 201 / 202 / 203 CAT / 204 / 502 CAT / 204 / 502 CAT / 204 / 502 CAT / 101 / 11 CAT / 101 / 11 / 301 / 302 / 303 / 401 CAT / 101 / 11 / 201 / 202 / 203 / 204 / 301 / 302 / 303 / 401 / 401E
Update Down Museum / Dark Museum - 3D Open The Dark Museum The Top Penang / Tech Dome Penang / Sky Bridge / Penang House of Music Teddyville Museum (Batu Ferringhi) Universiti Sains Malaysia (USM)	CAT / 204 / 301 / 302 / 303 / 401 / 401E / 502 CAT 101 / 102 301 / 302 / 303 601 / 603 / 604 / 613 (all from Penang Sentral)
Markets	
Batu Ferringhi Night Market Chowrasta Market Lorong Kulit Flea Market Cecil Street Market Pulau Tikus Market Air Itam Market	101 / 102 CAT / 11 / 101 / 201 / 202 / 203 / 204 / 206 / 301 / 302 / 303 / 401 / 401E / 502 202 / 203 / 204 / 304 (from KOMTAR) / 502 301 / 302 / 303 (alight at Jalan Gurdwara and walk to Lebuh Cecil) 101 / 103 (from KOMTAR) / 104 (from KOMTAR) / 304 (from KOMTAR) 201 / 203 / 204 / 502
Local Night Markets (Pasar Malam)	
Macallum Street Ghaut (Mon) Tanjung Bungah (Tue) Farim (Wed) Jalan Mahsuri, Bayan Baru (Thu) Taman Kheng Tian, Jelutong (Fri) Sungai Dua (Sat) Paya Terubong (Sun)	12 / 401E 101 / 102 202 / 203 302 / 303 / 401E 11 301 / 303 / 304 (from KOMTAR) / 308 (from Sungai Nibong Bus Terminal) 201 / 202 / 502

For more information about Rapid Penang's bus routes, please contact the company at:
Tel: +604-255 8000 (Hotline) / +604-238 1212 or visit www.rapidpenang.com.my

* Information is correct at time of printing. Please check website for more up-to-date bus routes.

BATU FERRINGHI



Batu Ferringhi is most popular for its sandy beaches and it draws endless streams of tourists every year. Along this winding stretch of beach, you will find a host of fun activities such as water sports and horse riding. The area comes to life with a night bazaar when the sun goes down.

📍 Jalan Batu Ferringhi, Batu Ferringhi

🕒 +6012-887 7195
🌐 ferringhibay.com

FERRINGHI BAY



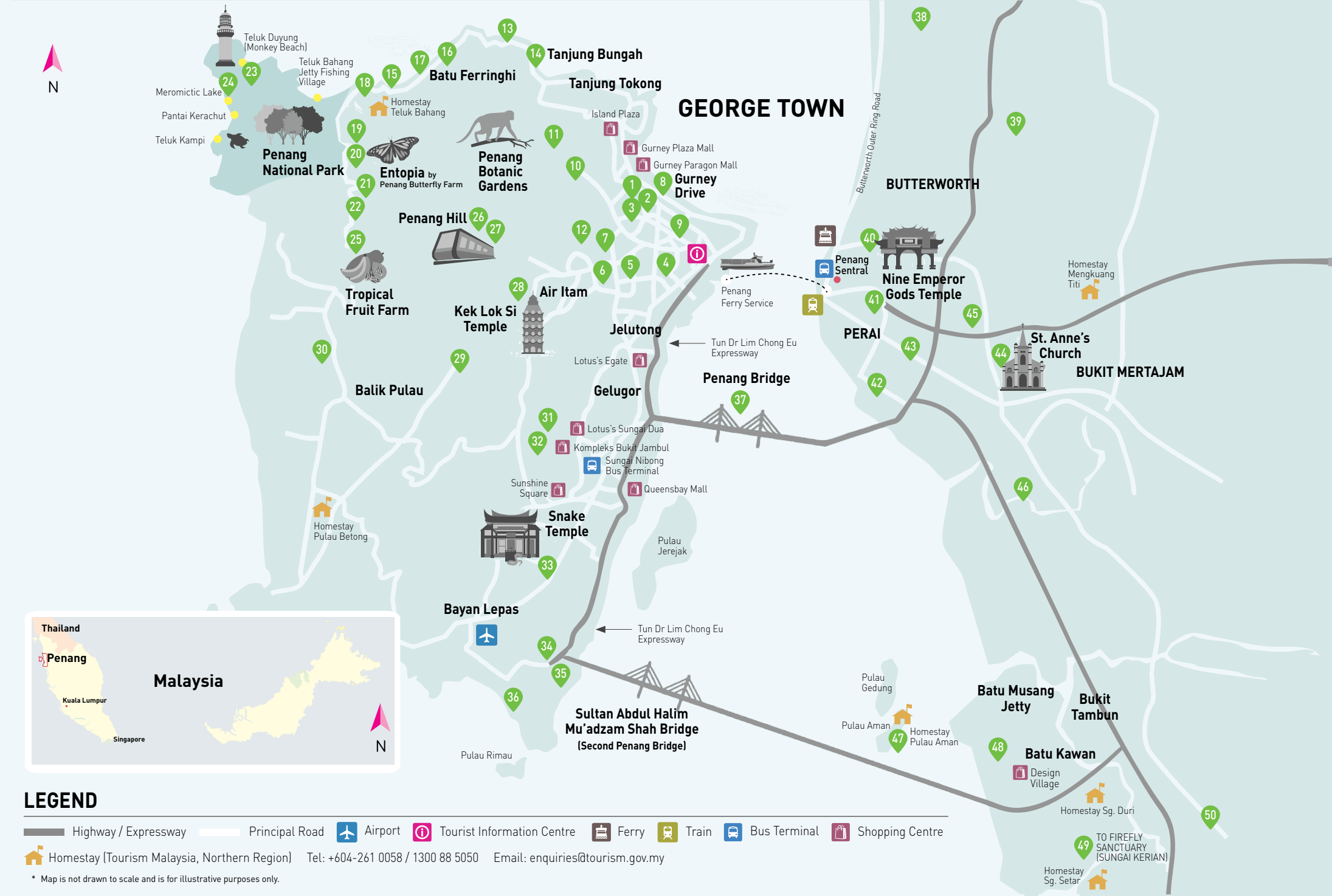
Ferringhi Bay, located at Batu Ferringhi, combines modern concepts with beachfront charm. Featuring transparent containers as F&B kiosks, this vibrant boulevard offers dining, entertainment, and a unique twist to a classic beach day, boosting tourism and embracing the equatorial lifestyle.

📍 No.1, Ferringhi Bay, Jalan Batu Ferringhi

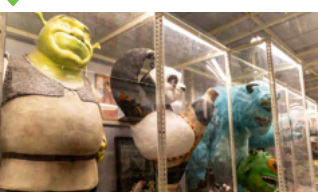
🕒 Opens daily: 12pm – 9pm (Mon-Thur)
11am – 10pm (Fri-Sun)

☎️ +6012-887 7195

🌐 ferringhibay.com



TOY MUSEUM



It is the country's first toy museum that has earned a spot in the Malaysia Book of Records. Toy Museum features over 110,000 toys, dolls and other collectibles including life-size figures of blockbuster movie characters.

📍 1370, Mk 2, Teluk Bahang

🕒 Opens 9am – 6pm daily
(Last admission at 5.30pm)

☎️ +6012-640 2096

🌐 penangtoymuseum.com

FOREST RECREATION PARK AND MUSEUM



Beautiful flora and faunas can be found in this 100-acre landscaped park. At the museum, you can also learn how the forestry sector plays an important role in the socio-economic development of Malaysia.

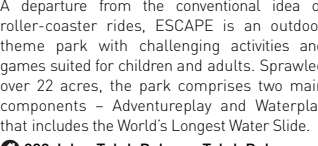
📍 Museum Perhutanan Hutan Lipur
Teluk Bahang, Taman Rimba, Teluk Bahang

🕒 Recreation Park: 7am – 7pm daily
(extended hours during Chinese New Year)
9am – 1pm / 2pm – 4.30 pm (Mon-Thur)
9am – 12.15pm / 2.45 – 4.30pm (Fri)
(Closed Sat & Sun)

☎️ +604-885 1280 / +604-885 2388

🌐 tropicalfruitfarm.com.my

TELUK BAHANG DAM



Located off the northern cape of Penang Island, its scenic surroundings are a favourite picnic spot for locals. Teluk Bahang Dam sets the dramatic stage for the annual Penang International Dragon Boat Festival races.

📍 Jalan Teluk Bahang, Teluk Bahang

🕒 Opens 7am – 7pm daily

PENANG NATIONAL PARK



A departure from the conventional idea of roller-coaster rides, ESCAPE is an outdoor theme park with challenging activities and games suited for children and adults. Sprawled over 22 acres, the park comprises two main components – Adventureplay and Waterplay that includes the World's Longest Water Slide.

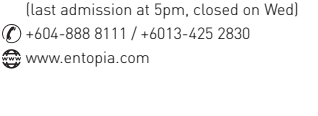
📍 828 Jalan Teluk Bahang, Teluk Bahang

🕒 Opens 10am – 6pm (Mondays closed)
(Last train from lower station at 9.45pm)
(last train from top station at 11pm)
* Ticket counter closes: 6:15am – 9:30pm

☎️ +604-828 8880 / 39

🌐 www.penanghill.gov.my

THE HABITAT, PENANG HILL



The Habitat is a world class eco-tourism facility on the fringes of a 130-million year old virgin rainforest on Penang Hill. It promotes environmental and conservation awareness among visitors through its amazing nature trails, canopy walkways and zip lines.

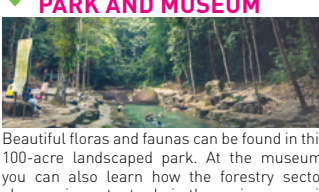
📍 Penang Hill, Jalan Stesen Bukit Bendera, Air Itam

🕒 Opens 9am – 9pm daily
(last entry by 6.30pm)

☎️ +6019-645 7741

🌐 thehabitat.my

TROPICAL FRUIT FARM



A 25 acre organic orchard with over 250 types of tropical and subtropical fruits. Relax and enjoy breathtaking views while sampling a wide variety of freshly cut fruits and fruit juices. Also, sample and buy fruit enzymes, honey as well as fruit tea and cinnamon Ceylon tea at the farm's retail shop.

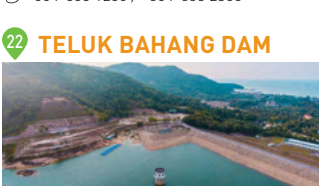
📍 25 Bat 18, Jalan Teluk Bahang, Teluk Bahang

🕒 Opens 9am – 5pm daily
(last admission at 4.30pm)

☎️ +6012-497 1931

🌐 tropicalfruitfarm.com.my

AIR ITAM DAM



Opened in 1962, Air Itam Dam is a popular recreational and picnic venue. It is located on gentle hillsides next to Penang Hill. The dam commands panoramic views of the island and George Town.

📍 Jalan Balik Pulau, Air Itam

🕒 Opens 8.30am – 5.30pm daily
(extended hours during Chinese New Year)
+604-828 3317
🌐 keklokstemple.com

KEK LOK SI TEMPLE



Kek Lok Si is one of the largest Buddhist temples in Southeast Asia. It is home to a seven-storey handcrafted "Pagoda of Ten Thousand Buddhas" and a 30.2m bronze Kuan Yin statue. During Chinese New Year, over 200,000 decorative lights and lanterns illuminate the temple.

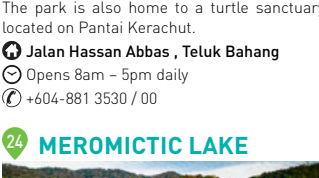
📍 2 Jalan Bukit Jambul, Bukit Jambul

🕒 7am–6pm daily (Go!F)
7.30am – 10pm daily (Restaurant)

☎️ +604-644 2255

🌐 penanggolfclub.com.my

PENANG HILL



At 830m above sea level, Penang Hill offers a panoramic view of the city. Get to the top by hiking or taking a funicular train to enjoy scenic views of the hill. At the summit, explore the flower garden, mini bird park, owl museum, bungalows, guesthouses and historic Bellevue Hotel. Also, there's The Habitat providing the most authentic, diverse and educational rainforest experience.

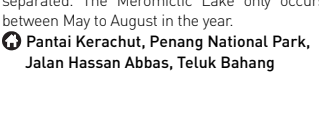
📍 Jalan Stesen Bukit Bendera, Air Itam

🕒 Opens 6.30am – 11pm daily
(last train from lower station at 9.45pm)
(last train from top station at 11pm)
* Ticket counter closes: 6:15am – 9:30pm

☎️ +604-828 8880 / 39

🌐 www.penanghill.gov.my

UNIVERSITI SAINS MALAYSIA (USM) MUSEUM AND ART GALLERY



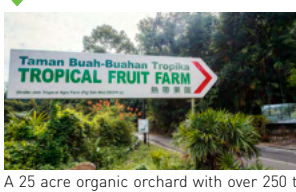
The museum exhibits a diverse collection of artefacts, textiles, prints, traditional jewellery and Malay daggers as well as a collection of paintings from the Baba-Nyonya and Malay cultures.

📍 Universiti Sains Malaysia (USM), Gelugor

🕒 9am – 5pm (Sat), Public holidays
1pm – 5pm (last of the month)
* Closed for prayers between 12pm – 2.45pm on Friday
* Reservation Required for a group of 20+ persons

☎️ +6012-443 9925 (Counter) Cik Fiza / +604-653 3261

PENANG GOLF CLUB



This world-class golf course offers formidable fairways and greens surrounded by rock passages and dense jungle. Its stunning 18 hole 5,763m, par 72 golf course was designed by Robert Trent Jones Jr., a noted golf course architect.

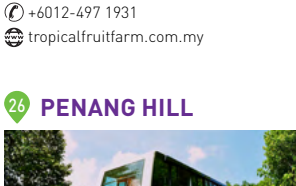
📍 2 Jalan Bukit Jambul, Bukit Jambul

🕒 7am–6pm daily (Go!F)
7.30am – 10pm daily (Restaurant)

☎️ +604-644 2255

🌐 penanggolfclub.com.my

PANTAI ESEN ATV



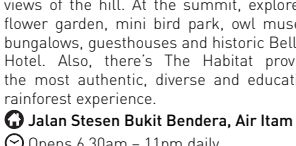
Not for the faint-hearted, ATV Extreme Park is perfect place to experience Penang's eco adventure. Get ready to experience off-road terrain and snippets of authentic local scenery such as rice paddy fields, mangrove forests, and beach landscapes.

📍 7289-1, Lintang Permatang Damar Laut, Rumah Murah Fasa 2, Batu Maung

🕒 Opens 8.30am – 7pm (Closed on Monday)
📞 +6019-207 5587 (whatsapp/call)

📍 Pantai Esen ATV Extreme Park

AUTO-CITY JURU



Auto-City is a one-stop destination for food, entertainment and shopping. It hosts over 30 restaurants serving both local and international cuisines. It also consists of entertainment outlets with unique concepts and live music. Shopping here is an experience that allows you to blend with nature as Auto-City adopts an eco-tourism approach.

📍 1688-F8, Jalan Perusahaan, Auto-City, North-South Juru Interchange, Perai

🕒 Opens 10am – 12am daily
6pm – 12am (for shops and food court), restaurants outside operate at different hours

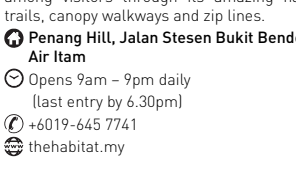
☎️ +604-501 1222 (Management Office)
🌐 www.autocity.com.my

PENANG BRIDGE



The first and main link between Penang Island and the mainland of Peninsular Malaysia, Penang Bridge opened in 1985 spanning 13.5km. It is also the annual route for the Penang Bridge International Marathon. A second link was however completed in 2014 (Sultan Abdul Halim Mu'adzam Shah) with a total length of 24km, connecting the south-eastern part of the island to the mainland.

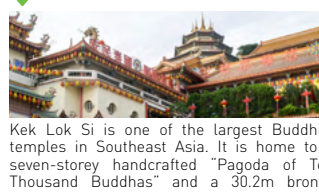
BATU MAUNG FISHING VILLAGE



The Batu Maung Fishing Village is located at Penang Island's south-eastern tip. It is famed for a mysterious giant footprint on a boulder at the beach. Known as Tapak Gendembai, the Chinese believe the footprint was left by the mighty Admiral Cheng Ho. However, Indians believe it belonged to the monkey God Hanuman whilst the Malays believe it was from a fleeing giant.

📍 Batu Maung

PENANG WAR MUSEUM



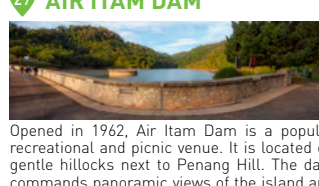
The Penang War Museum was built on the remnants of an Old British fort which defended Penang's coast. It features old war relics and depicts the lifestyle of soldiers in those times. The museum also offers an authentic battleground setting for paintball tournaments.

📍 Jalan Batu Maung, Batu Maung

🕒 Opens 9am – 6pm daily
☎️ +6016-421 3606 / +6019-456 3748

📍 Penang War Museum

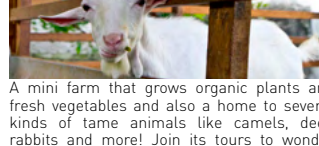
JALAN TODAK SEBERANG JAYA, PERAI



Opens 9am – 6pm daily
☎️ +604-399 1899

🌐 www.penangbirdpark.com.my

DESIGN VILLAGE OUTLET MALL



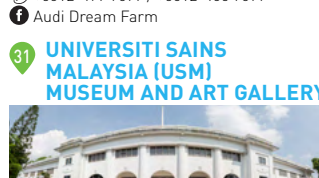
The first and only outlet mall in Penang as well as the biggest outlet mall in Malaysia. Located in Batu Kawan in a township called Bandar Cassia, it is five minutes from the mainland entrance of the Second Penang Bridge. The 400,000 sq ft mall spans 40 acres, set in a lush tropical garden with wide sheltered walkways.

📍 733, Jalan Cassia Barat 2, Bandar Cassia

🕒 Opens 11am – 10pm daily
☎️ +604 589 9888

🌐 designvillagepenang.com

FIREFLY SANCTUARY



Behold the rare enchanting sight of fireflies along the Sungai Kerian, a river with a sunrise or sunset boat ride. Other exotic activities you could try are octopus catching, bat cave exploration and a visit to the Penang Bridge International Marathon. Chalets are available as well.

📍 2938, Jalan Teluk Ipi, Nibong Tebal

🕒 7.45pm & 8.30pm
(Operates two trips